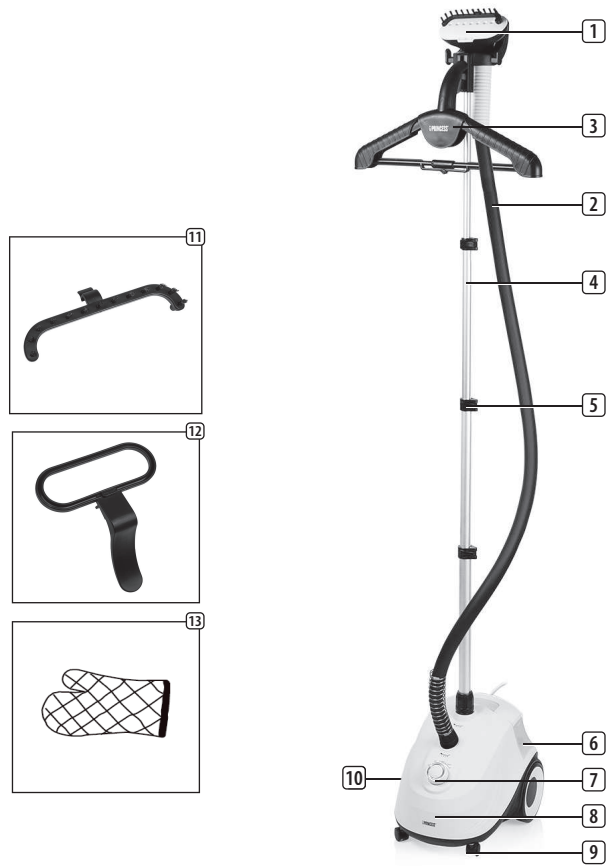




Garment Steamer  
01.332848.02.002

PARTS DESCRIPTION



EN Instruction manual

SAFETY

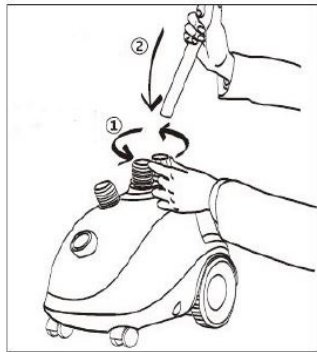
- By ignoring the safety instructions the manufacturer cannot be held responsible for the damage.
- If the supply cord is damaged, it must be replaced by the manufacturer, its service agent or similarly qualified persons in order to avoid a hazard.
- Never move the appliance by pulling the cord and make sure the cord cannot become entangled.
- The appliance must be placed on a stable, level surface.
- The user must not leave the device unattended while it is connected to the supply.
- This appliance is only to be used for household purposes and only for the purpose it is made for.
- This appliance shall not be used by children aged less than 8 years. This appliance can be used by children aged from 8 years and above and persons with reduced physical, sensory or mental capabilities or lack of experience and knowledge if they have been given supervision or instruction concerning use of the appliance in a safe way and understand the hazards involved. Children shall not play with the appliance. Keep the appliance and its cord out of reach of children aged less than 8 years. Cleaning and user maintenance shall not be made by children unless older than 8 and supervised.
- To protect yourself against an electric shock, do not immerse the cord, plug or appliance in the water or any other liquid.
- Keep the appliance and its cord out of reach of children less than 8 years of age when it is energized or cooling down.
- Do not open the water tank during use.
- Care should be taken when using the appliance due to the emission of steam.
- Unplug the appliance during filling and cleaning.
- Warning: Serious injuries can occur in case of misusing the appliance and accessories.

- Surface is liable to get hot during use.
- WARNING:** always unplug the garment steamer before attaching or detaching the fabric brush.
- WARNING:** do not use the steamer directly on the body, animals, or while wearing the garments.

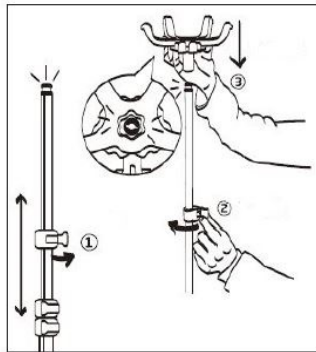
PARTS DESCRIPTION

- Steam nozzle
- Steam hose
- Multi-functional hanger
- Telescopic bar
- Pole locking knob
- Water tank
- Switch knob
- Base
- Wheels
- Water drain
- Fabric brush
- Pants press
- Glove

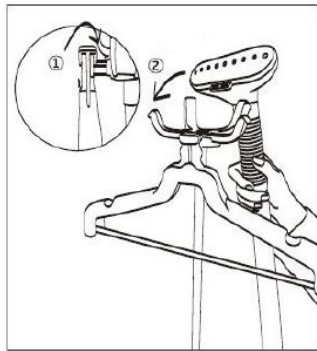
INSTALLATION INSTRUCTIONS



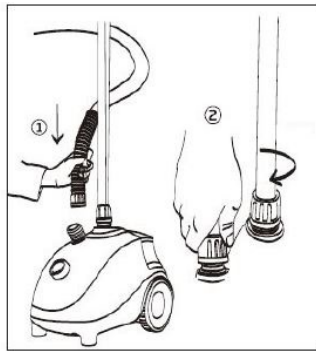
1



2

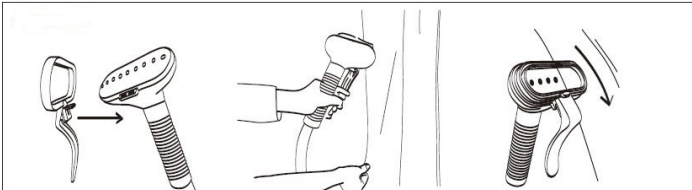
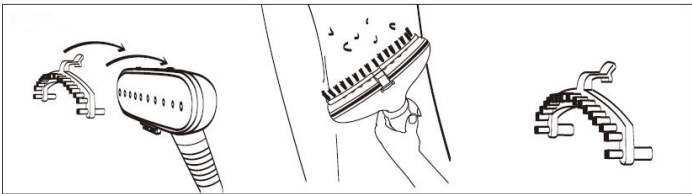


3



4

- Take the appliance and accessories out of the box. Remove the stickers, protective foil or plastic from the device.
- Loosen the lock nut of the rod. Place the telescopic bar and lock it. (Picture 1)
- Unlock the telescopic bar lock to extend the post to the desired height and then lock it in the right place. (Picture 2)
- Attach the hanger to the top and lock in place. (Picture 3)
- Connect the hose to the base of the hose connector. Screw the hose connector nut into place.
- FABRIC BRUSH ASSEMBLY**



- Turn off the appliance, wait till the steam stops spraying out of the nozzle.
- Place the rods of the fabric brush onto the steam nozzle.
- Press the brush to the steam nozzle and lock in place.
- Install the press on the bottom of the steam nozzle and lock it. Put the pants in the middle between the steam nozzle and pants press, push the handle with one finger, and pull the steam nozzle downwards, This will iron the pants.

BEFORE THE FIRST USE

- When operating the appliance for the first time, allow it to steam for a few minutes. This will remove any impurities and odours that might have been left by the mass. Yturing pices. You may want to try the steamer on an old piece of fabric before steaming your garment the first time.
- There may be leakage from the steam nozzle if the garment steamer temperature is not high enough to vaporize water and create steam. Therefore, ensure that the garment steamer is always preheated for 2-3 minutes prior to use.
- To avoid an electrical circuit overload, it is recommended that no other appliances are plugged into the same circuit as your garment steamer when it is in use.
- The garment steamer is easy to use and is perfect for removing wrinkles from garments and curtains as well as refreshing furnishing fabrics.
- If using the garment steamer without the fabric brush, keep a distance of at least 5cm between the steam nozzle and the garment.
- Do not directly hover the garment steamer over metal accessories.

Filling the water tank

- Take out the water tank and unscrew the water tank nut.
- Fill the tank with water (the temperature of the water should be under 50 °C).
- In order to prolong the life of the appliance, we recommend you to use distilled water.
- Do not use the machine when the water tank is low or lack of water during operation, or it will damage the appliance.

USE

- The high-temperature steam spraying from the nozzle can only soften the garment fabric. Hold the garment with one hand, and hold the handle of the steam nozzle with the other. Press the steam nozzle on the garment tightly, moving it in an up and down vertical motion. The high-temperature steam will remove wrinkles.
- Hold the edge of the garment tightly when steaming the bottom of the garment. Steam in different directions until the fabric is wrinkle free. Be careful about the hot steam spraying out of the steam nozzle.
- Press downward for a longer time on the garment collar, and steam it back and forth.
- Straighten the sleeves, move up and down to remove wrinkles.
- Steam the back of the garment after finishing the front.
- After using the appliance, turn the power button to position Off. Disconnect the power plug out of the socket.
- Take off the water tank and empty the remaining water from the tank.

**CAUTION:** High temperature! Please confirm whether the material is high-temperature resist or not before steaming. Do not leave the steam nozzle on the same spot for a long time to avoid damage to the garment.

**CAUTION:** when not using the appliance and before storage, continue steaming until the water tank runs out of water, then turn off and unplug the appliance and wait until the appliance is cooled down completely.

TROUBLESHOOTING

Problem	Possible cause	Solution/Tips
The unit fails to steam. Indicating lamps do not illuminate.	The plug is not inserted in the mains socket correctly. Household circuit breaker is tripped.	Insert the plug correctly. Reset the circuit outlet, check the fuse of your mains connection or contact a qualified electrician.
The unit fail to steam. Indicating lamps illuminate.	Mineral build-up in the unit. The water tank is empty.	Follow the removal mineral build procedure to remove the mineral residues. Refill the water tank.
Excessive gurgling sound from hose or steam nozzle.	Condensation in hose.	A gurgling sound is normal during the steam process. If there is an excessive noise, hold the hose vertically to allow water to run back into the water tank.

CLEANING AND MAINTENANCE

How to use the drain plug

- When the garment steamer is not in use for a long time, the water inside may get deteriorated, or even breed bacteria.
- A gray drain plug is set at the bottom of the appliance. Screw the drain plug anticlockwise to drain the water reservoir.
- After the reservoir is empty, replace and tighten the drain plug to avoid the water to flow out.

Removal mineral build-up

To reduce the accumulation of minerals in the steamer, the use of demineralised or distilled water is recommended. Follow the steps below to remove the built-up mineral:

- Turn off the unit and unplug the power cord.
- Remove the steam hose and the telescopic bar.
- Drain the water tank.
- Mix a solution of 50% vinegar and 50% water, in general 2 cups of mixture is sufficient.
- Pour the mixture slowly into the water tank.
- Continue to pour the mixture into the water tank until it is about half full.
- Wait for about 40 minutes.
- Drain the mixture over a sink.
- Pour clean water into the water tank and let it drain. Repeat this step until the vinegar smell disappears.
- Reassemble the unit.
- When not using the appliance and before storage, continue steaming until the water tank runs out of water, then turn off and unplug the appliance and wait until the appliance is cooled down completely.
- Do not put the appliance in water. Use a dry clean cloth to dry the appliance, no special cleaning agent is needed.
- Make sure the main body is dry before storage or packing.

ENVIRONMENT



This appliance should not be put into the domestic garbage at the end of its durability, but must be offered at a central point for the recycling of electric and electronic domestic appliances. This symbol on the appliance, instruction manual and packaging puts your attention to this important issue. The materials used in this appliance can be recycled. By recycling of used domestic appliances you contribute an important push to the protection of our environment. Ask your local authorities for information regarding the point of recollection.

Support

You can find all available information and spare parts at [www.princesshome.eu!](http://www.princesshome.eu!)



大昌貿易行有限公司



請於購買後 14 日內掃描以上 QR code 或請瀏覽：  
[www.dch-eas.com/services.html](http://www.dch-eas.com/services.html) 完成產品保養登記及詳閱保養條款及細則  
如有任何查詢，請致電3193 9888。  
Please scan the above QR code Or visit our website:  
<https://www.dch-eas.com/services.html> to complete for the online warranty registration within 14 days of purchase and perusal the warranty terms & conditions. Should you have any enquiry, please feel free to contact our service Hotline 3193 9888.