



**EN** Instruction manual




**SMART** OIL FILLED RADIATOR

01.348630.02.001 & 01.348631.02.001

PARTS DESCRIPTION



**SAFETY**

- By ignoring the safety instructions the manufacturer cannot be held responsible for the damage.
- If the supply cord is damaged, it must be replaced by the manufacturer, its service agent or similarly qualified persons in order to avoid a hazard.
- Never move the appliance by pulling the cord and make sure the cord cannot become entangled.
- To protect yourself against an electric shock, do not immerse the cord, plug or appliance in the water or any other liquid.
- The appliance must be placed on a stable, level surface.
- The user must not leave the appliance unattended while it is connected to the supply.
- This appliance is only to be used for household purposes and only for the purpose it is made for.
- This appliance can be used by children aged from 8 years and above and persons with reduced physical, sensory or mental capabilities or lack of experience and knowledge if they have been given supervision or instruction concerning use of the appliance in a safe way and understand the hazards involved. Children shall not play with the appliance. Cleaning and user maintenance shall not be made by children without supervision.
- Children shall not play with the appliance.
- Cleaning and user maintenance shall not be made by children without supervision.
- Children of less than 3 years should be kept away unless continuously supervised.
- Children aged from 3 years and less than 8 years shall only switch on/off the appliance provided that it has been placed or installed in its intended normal operating position and they have been given supervision or instruction concerning use of the appliance in a safe way and understand the hazards involved. Children aged from 3 years and less than 8 years shall not plug in, regulate and clean the appliance or perform user maintenance.
-  **WARNING:** Do not cover

- **CAUTION:** Some parts of this product can become very hot and cause burns. Particular attention has to be given where children and vulnerable people are present.
- In order to avoid overheating, do not cover the heater.
- Do not use this heater in the immediate surroundings of a bath, a shower or a swimming pool.
- Do not use this heater if it has been dropped.
- Do not use if there are visible signs of damage to the heater.
- Use this heater on a horizontal and stable surface, or fix it to the wall, as applicable.
- **WARNING:** Do not use this heater in small rooms when they are occupied by persons not capable of leaving the room on their own, unless constant supervision is provided.
- **WARNING:** To reduce the risk of fire, keep textiles, curtain, or any other flammable material a minimum distance of 1m from the air outlet.
- The heater must not be located immediately below a socket-outlet.



Waste electrical products should not be disposed of with household waste. Please recycle where facilities exist. Check with your local Authority or local store for recycling advice.



This product complies with conformity requirements of the applicable European regulations or directives.



The Green Dot is the registered trademark of Der Grüne Punkt – Duales System Deutschland GmbH and is protected as a trademark worldwide. The logo may only be used by customers of DSD GmbH holding a valid trademark usage contract or by engaged waste management companies within the Federal Republic of Germany. This also applies to reproduction of the logo by third parties in a dictionary, an encyclopaedia or an electronic database containing a reference manual.



The universal recycling symbol, logo, or icon is an internationally recognized symbol used to designate recyclable materials. The recycling symbol is in the public domain and is not a trademark.



This product complies with conformity requirements of the applicable European Regulations or Directives.



This product complies with conformity requirements of the applicable UK Regulations.



Waste electrical products should not be disposed of with household waste. Please recycle where facilities exist. Check with your Lokal Authority or local store for recycling advise.

## Safety Coin cell



**BATTERY WARNING: KEEP OUT OF REACH OF CHILDREN**

Store spare batteries securely. Dispose of used batteries immediately and safely. If you think batteries might have been swallowed or placed inside any part of the body, seek immediate medical attention.

- If the battery compartment does not close securely, stop using the product and keep it away from children.

- Be alert, there are no obvious symptoms if a child has swallowed a button or coin battery. If your child appears unwell and there are no obvious symptoms, then check to make sure there are no batteries missing from any items they have been around. If you suspect they have swallowed a coin/button cell, then seek medical attention. Similarly, if they vomit bright red fresh blood seek immediate medical help.
- Always remain vigilant with discharged or spare button or coin batteries in the home and in products that contain them.



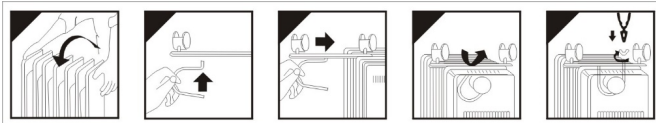
**PRODUCT CONTAINS A COIN/BUTTON CELL**

## PARTS DESCRIPTION

1. Display
2. Cable storage
3. Castors
4. Castor mounting plate
5. Remote

## BEFORE THE FIRST USE

- Turn the appliance upside down and place it on a soft surface to prevent scratching of the housing.
- Screw off the wing nuts from the U-shaped bolt, and place the U-shaped bolt between the most outer fins with the threaded ends pointing upwards.
- Place the castor mounting plate over threaded ends of the U-shaped bolt and screw on the wing nuts.



- Place the device on a flat stable surface and ensure a minimum of 10 cm. free space around the device. This device is not suitable for installation in a cabinet or for outside use.
- When the device is turned on for the first time, a slight odour will occur. This is normal, ensure adequate ventilation. This smell is only temporary and will soon fade.

## USE

- Turn on the power, the device goes in stand-by mode. Only the power button indicator will be on.
- Press the power button to turn the device on, all the buttons and the display will be on.
- Press the power button again to shut down, all goes off, only the power button indicator stays on.

## Power setting

- In the power-on state, press "mode" to enter the pre-programmed function settings, P1: 800W, P2: 1200W, and P3: 2000W. Continue to press "+" or "-" to adjust to the desired setting, after no operation for 3 seconds, the device will automatically exit the setting state and return to the temperature display interface. (The default boot position of the machine is P3)

## Temperature setting

- In the power-on state, press "mode" twice to enter the set temperature display, the temperature content will flash, continue to press "+" or "-" to adjust the set temperature, the setting range is "10-35 °C". After no operation for 5 seconds, the device automatically exits the setting state. The product automatically controls heating on or off according to the difference between the ambient temperature and the set temperature. (When the temperature reaches the set temperature and stops heating, the over-temperature warning light will be lit)

## Timer setting

- In the power-on state, press "mode" three times to enter the timer setting, the display shows "0", keep pressing "+" or "-" to adjust the set time, the timer can be set from 1H to 24H. After 5 seconds of no operation after setting the timer, the device will return to the temperature interface and start the timer automatically. After the set time has elapsed, the machine switches off and enters standby mode. (The corresponding timing indicator lights up in the timer status)

**Manual shutdown**

- The timer content will be automatically cleared, the set temperature will stay at the previous setting.

**Remote control**

- The remote control uses one button-cell (CR2025)



- On/off button
- + button, temperature up
- Mode button
- - button, temperature down

**USING THE APPLIANCE WITH THE PRINCESS HOME APP**

The item can be used manually with its built-in controls or you can use a smart phone or smart speaker to control it. Before you begin, ensure the Princess Home app is downloaded. The Princess Home app is available on Android and iOS.

Download the correct version of the Princess Home app via our website [princesshome.eu/nl-nl/princess-home-app](http://princesshome.eu/nl-nl/princess-home-app) or use QR:



iOS™



Android™

**Pair your device to Princess Home app**

- Make sure the item is powered.
- Press the on/off button for about 3 seconds until you hear a beep and the Wi-Fi indicator light is flashing rapidly.
- Open the Princess Home app.
- Select your country code, enter the cell phone number and tap "Get" to get a message containing the verification code.
- Enter the verification code in the message and tap "Log in" to log in to the App.

- Click "Add Device" to add a new device.
- Select the device you wanted to connect.
- Follow the instructions on the app to connect the item.

#### **How to set local time**

When the item is connected to the Princess Home App, it will automatically update the local time according to the time on the phone.

#### **Wi-Fi information**

Wireless technology: Wi-Fi

Operating frequency: 2400MHz~2483.5MHz

Max. radio-frequency power: 20 dBm

#### **DECLARATION OF CONFORMITY**

- Hereby, Smartwares Europe declares that the radio equipment type 348630 / 348631 are in compliance with Directive 2014/53/ EU
- The full text of the EU declaration of conformity is available at the following internet address: [www.princesshome.eu/doc](http://www.princesshome.eu/doc)

#### **CLEANING AND MAINTENANCE**

- Unplug the appliance and allow it to cool down. Use a soft, slightly damp cloth to wipe appliance surfaces. Do not allow water or any other liquid to get into the unit.

- Clean the air suction opening from time to time with a fine brush.

#### **ENVIRONMENT**



This appliance should not be put into the domestic garbage at the end of its durability, but must be offered at a central point for the recycling of electric and electronic domestic appliances. This symbol on the appliance, instruction manual and packaging puts your attention to this important issue. The materials used in this appliance can be recycled. By recycling of used domestic appliances you contribute an important push to the protection of our environment. Ask your local authorities for information regarding the point of recollection.

#### **Support**

You can find all available information and spare parts at [www.princesshome.eu](http://www.princesshome.eu)!







This product is only suitable for well insulated spaces or occasional use.

Wireless technology: Wi-Fi  
Operating frequency: 2400MHz~2483.5MHz  
Max. radio-frequency power: 20 dBm



**smartwares**<sup>®</sup> Europe  
Swaardvenstraat 65 | 5048 AV | Tilburg  
The Netherlands | [www.princesshome.eu](http://www.princesshome.eu)



**smartwares**<sup>®</sup> Safety and Lighting Ltd.  
West Point, Second Floor | Mucklow Office Park  
Mucklow Hill | Halesowen | West Midlands | B62 8DY  
United Kingdom | [www.princesshome.co.uk](http://www.princesshome.co.uk)