

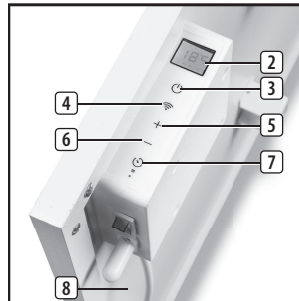


**EN** Instruction manual



Smart Infrared Panel Heater 350 | 540 | 700  
01.348035.02.001 | 01.348054.02.001 | 01.348070.02.001


PARTS DESCRIPTION



**SAFETY**

- By ignoring the safety instructions the manufacturer cannot be held responsible for the damage.
- If the supply cord is damaged, it must be replaced by the manufacturer, its service agent or similarly qualified persons in order to avoid a hazard.
- Never move the appliance by pulling the cord and make sure the cord cannot become entangled.
- The appliance must be placed on a stable, level surface.
- The user must not leave the appliance unattended while it is connected to the supply.
- This appliance is only to be used for household purposes and only for the purpose it is made for.
- This appliance can be used by children aged from 8 years and above and persons with reduced physical, sensory or mental capabilities or lack of experience and knowledge if they have been given supervision or instructions concerning use of the appliance in a safe way and understand the hazards involved.
- Children shall not play with the appliance.
- Cleaning and user maintenance shall not be made by children without supervision.
- Children of less than 3 years should be kept away unless continuously supervised.
- Children aged from 3 years and less than 8 years shall only switch on/off the appliance provided that it has been placed or installed in its intended normal operating position and they have been given supervision or instruction concerning use of the appliance in a safe way and understand the hazards involved.
- Children aged from 3 years and less than 8 years shall not plug in, regulate and clean the appliance or perform user maintenance.
- To protect yourself against an electric shock, do not immerse the cord, plug or appliance in the water or any other liquid.
- **WARNING:** Some parts of this product can become very hot and cause burns. Particular attention has to be given where children and vulnerable people are present.
- Do not use this heater in the immediate surroundings of a bath, a shower or a swimming pool.

- Joists, beams and rafters shall not be cut or notched to install the appliance.
- Please do not install the appliance close to curtains and other combustible materials. This could cause a fire.
- The appliance shall, under no circumstances, be covered with insulating material or similar material.
- The heater must not be located immediately below a socket-outlet.
- Do not use this heater if it has been dropped.
- **WARNING:** The heater must not be used if the glass panels are damaged.
- Use this heater on a horizontal and stable surface, or fix it to the wall, as applicable.
- **WARNING:** Do not use this heater in small rooms when they are occupied by persons not capable of leaving the room on their own, unless constant supervision is provided.
- **WARNING:** To reduce the risk of fire, keep textiles, curtain, or any other flammable material a minimum distance of 1m from the air outlet.
- The heater needs to be installed so that the switches and other controls cannot be touched by a person in the bath or shower.

-  **WARNING:** In order to avoid overheating, do not cover the heater.



This product complies with conformity requirements of the applicable European Regulations or Directives.



This product complies with conformity requirements of the applicable UK Regulations.



Waste electrical products should not be disposed of with household waste. Please recycle where facilities exist. Check with your Lokal Authority or local store for recycling advise.

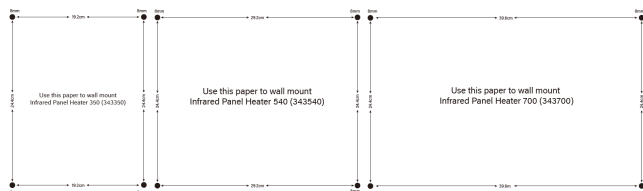
## PARTS DESCRIPTION

1. On / Off switch
2. Display
3. On/off button
4. WiFi button
5. + button
6. – button
7. Timer button
8. Heating indicator
9. Wall bracket
10. Heater
11. Feet

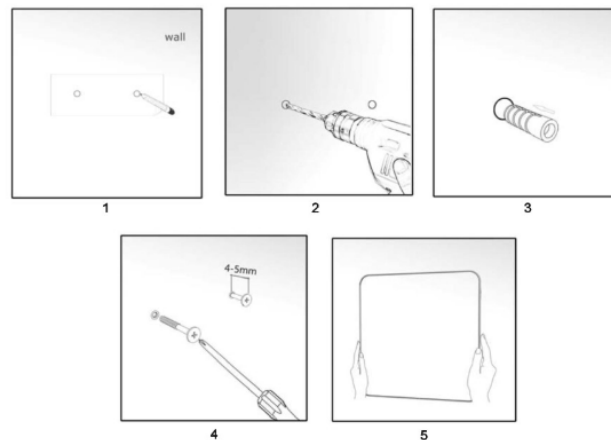
## INSTALLATION

### Wall mounting

- Please note that the product must be installed at least 15 cm from the floor and 50 cm from the ceiling.
- The heater must be mounted at 4 points, ensure there is a 300mm clearance on all sides of the heater.
- Measure the distance between the centre of each bracket both horizontally and vertically to ensure drilling holes in the correct place. Mark the positions of the 4 holes to be drilled on the wall (1), use the supplied wall mount drawings for correct measures.



- Drill the holes in the wall (2), then insert the plastic expanded plugs (3) and screw the 4 supplied screws into the plastic expanded plugs (4).
- Attached the panel heater onto the screws and move the heater to the left so that the screws drop into the securing slots (5).



### Foot assembly

- If the heater is not mounted on the wall, the supplied feet must be fitted to the unit.
- To fix the feet, remove the bottom screws from the heater housing.
- Place the feet and secure them by putting the screws back into the housing.
- Take care to ensure that the feet are located correctly on the bottom end of the heater.



## BEFORE THE FIRST USE

- Put the power cable into the socket. (Note: Make sure the voltage which is indicated on the device matches the local voltage before connecting the device. Voltage 220V-240V 50/60Hz).
- When the device is turned on for the first time, a slight odour will occur. This is normal, ensure adequate ventilation. This smell is only temporary and will soon fade.
- During heating up and cooling down there may be some noises caused by the heater casing expanding and contracting, this is normal and does not indicate any fault.

## TOUCH BUTTON/DISPLAY FUNCTIONS USE

- Push the on/off switch on the side of the heater to turn the heater completely on or off.

### Touch button functions

- Press the on/off touch button to turn the heater on, pressing it again will set the device into stand-by mode.

- Wi-Fi button, when device is on or in stand-by mode:
  - Press and hold for 6 seconds to put the heating into pairing mode (will beep 3 times).
  - Follow the instructions on your phone.
- Press 'temperature up (+)' or 'temperature down (-)' buttons to regulate the temperature you desired. The temperature can be set between 0°C and 37°C. Holding the + or – button will increase or decrease target temperature continuously.
- Timer button; when the device is on, press the timer button, the time starts blinking "00:00".
  - Use the + and – buttons to set the hours.
  - No button press for 5 seconds stops the time blinking.
  - Setting time to 00:00 does not enable timer.
  - Press timer button again -> time starts blinking and allows the user to change timer duration.
  - The remaining time is visible at the display.
  - After the set time has expired the device will power off.
  - Long-press while timer is running cancels the timer mode.
- Indicator lamp;
  - On when heating element is on.
  - Off when heating element is off.

### Display

- When the red on/off switch is off, the display screen is also off.
- When power is on (on/off switch is on), and the machine is in stand-by mode, the display screen is off, only when the device is already connected to Wi-Fi, the display screen is off with only the Wi-Fi icon visible.

- Pressing the on/off touch button when the power is on will show the Wi-Fi icon + current temperature + time (if set on the phone) on the display screen with back ground light on.
- After 10 seconds without pressing one of the touch buttons, the back ground light will go off. On screen you will still see: Wi-Fi icon + current temperature + time (if set on the phone)



#### USING THE HEATER WITH PRINCESS HOME APP

- The heater can be used manually with its built-in controls or you can use a smart phone or smart speaker to control it. Before you begin, ensure the Princess Home app is downloaded. The Princess Home app is available on Android and iOS.
- Download the correct version of the Princess Home app via our website [princesshome.eu/nl-nl/princess-home-app](http://princesshome.eu/nl-nl/princess-home-app) or use QR:



IOS



Google Play

#### Pair your heater to Princess Home app

- Make sure your heater is powered.

- Open the Princess Home app.
- Select your country code, enter the cell phone number and tap "Get" to get a message containing the verification code.
- Enter the verification code in the message and tap "Log in" to log in to the App.
- Click "Add Device" to add a new device.
- Select the device you wanted to connect.
- Follow the instructions on the app to connect the heater.

#### How to set local time

- When the item is connected to the Princess Home App, it will automatically update the local time according to the time on the phone.

#### Technical Specification

Details	348035	348054	348070
Voltage	220-240V~	220-240V~	220-240V~
Frequency	50/60Hz	50/60Hz	50/60Hz
Power	350W	540W	700W

Wireless technology: Wi-Fi

Operating frequency: 2400MHz~2483.5MHz

Max. radio-frequency power: 18 dBm

#### CLEANING AND MAINTENANCE

- Before cleaning, unplug the appliance and wait for the appliance to cool down.

- Clean the appliance with a damp cloth. Never use harsh and abrasive cleaners, scouring pad or steel wool, which damages the device.

## **DECLARATION OF CONFORMITY**

- Hereby, Smartwares Europe declares that the radio equipment type 348035 / 348054 / 348070 are in compliance with Directive 2014/53/EU
- The full text of the EU declaration of conformity is available at the following internet address: [www.princesshome.eu/doc](http://www.princesshome.eu/doc)

## **ENVIRONMENT**



■ This appliance should not be put into the domestic garbage at the end of its durability, but must be offered at a central point for the recycling of electric and electronic domestic appliances. This symbol on the appliance, instruction manual and packaging puts your attention to this important issue. The materials used in this appliance can be recycled. By recycling of used domestic appliances you contribute an important push to the protection of our environment. Ask your local authorities for information regarding the point of recollection.

### **Support**

You can find all available information and spare parts at [www.princesshome.eu](http://www.princesshome.eu)!







This product is only suitable for well insulated spaces or occasional use.

Wireless technology: Wi-Fi  
Operating frequency: 2400MHz~2483.5MHz  
Max. radio-frequency power: 18 dBm



EU address:	UK address:
<b>smartwares<sup>®</sup></b> Europe	<b>smartwares<sup>®</sup></b> Safety and Lighting Ltd.
Swaardvenstraat 65 5048 AV Tilburg The Netherlands	Meriden House, 6 Great Cornbow Halesowen, West Midlands, B63 3AB
<a href="http://www.smartwares.eu">www.smartwares.eu</a>	United Kingdom