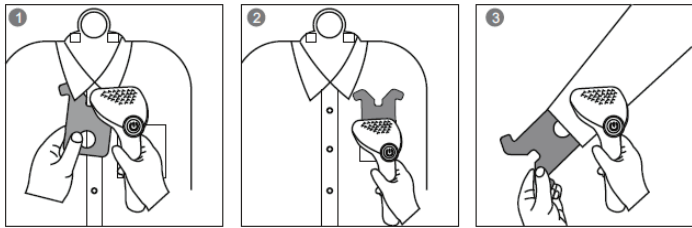
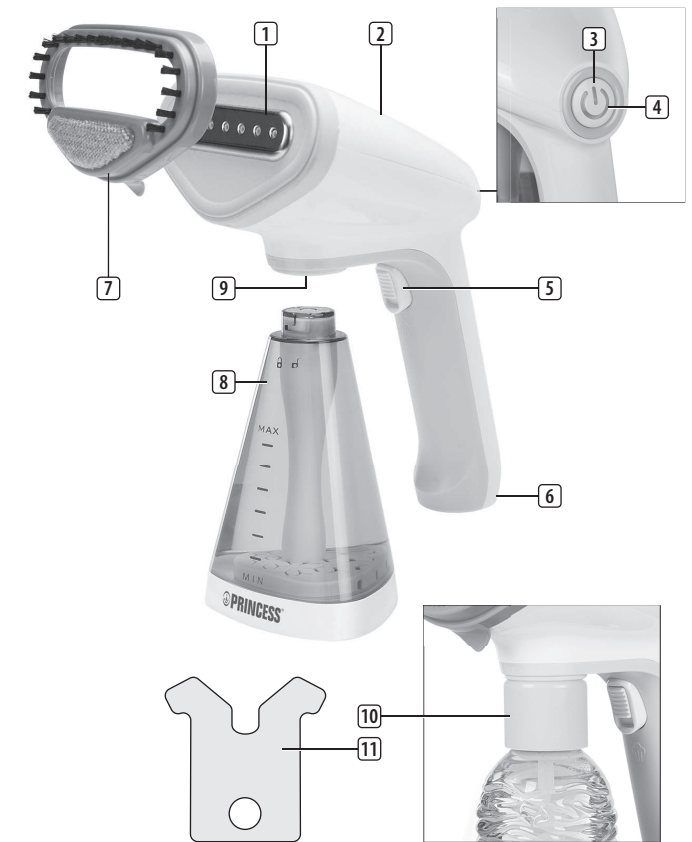




Handheld Garment Steamer
01.332846.16.001

PARTS DESCRIPTION



EN Instruction manual

SAFETY

- By ignoring the safety instructions the manufacturer can not be hold responsible for the damage.
- If the supply cord is damaged, it must be replaced by the manufacturer, its service agent or similarly qualified persons in order to avoid a hazard.
- Never move the appliance by pulling the cord and make sure the cord can not become entangled.
- The appliance must be placed on a stable, level surface.
- The user must not leave the device unattended while it is connected to the supply.
- This appliance is only to be used for household purposes and only for the purpose it is made for.
- This appliance shall not be used by children aged less than 8 years. This appliance can be used by children aged from 8 years and above and persons with reduced physical, sensory or mental capabilities or lack of experience and knowledge if they have been given supervision or instruction concerning use of the appliance in a safe way and understand the hazards involved. Children shall not play with the appliance. Keep the appliance and its cord out of reach of children aged less than 8 years. Cleaning and user maintenance shall not be made by children unless older than 8 and supervised.
- To protect yourself against an electric shock, do not immerse the cord, plug or appliance in the water or any other liquid.
- Keep the appliance and its cord out of reach of children less than 8 years of age when it is energized or cooling down.
- Do not open the waterreservoir during use.
- Care should be taken when using the appliance due to the emission of steam.
- Unplug the appliance during filling and cleaning.
- Warning: Serious injuries can occur in case of misusing the appliance and accessories.

- Surface are liable to get hot during use.
- WARNING: always unplug the garment steamer before attaching or detaching the fabric brush.
- WARNING: do not use the steamer directly on the body, animals, or while wearing the garments.

PARTS DESCRIPTION

1. Steam nozzle
2. Main body
3. Power button
4. Indicator light
5. Steam button
6. Power cord
7. Fabric brush
8. Water tank
9. Water inlet
10. Bottle connector
11. Collar aid

BEFORE THE FIRST USE

- Take the appliance and accessories out the box. Remove the stickers, protective foil or plastic from the device.
- When operating the appliance for the first time, allow it to steam for a few minutes. This will remove any impurities and odours that might have been left by the manufacturing proces. You may want to try the steamer on an old piece of fabric before steaming your garment the first time.
- There may be leakage from the steam nozzle if the garment steamer temperature is not high enough to vaporize water and create steam. therefore, ensure that the garment steamer is always preheated for 2-3 minutes prior to use.
- To avoid an electrical circuit overload, it is recommended that no other appliances are plugged into the same circuit as your garment steamer when it is in use.
- The garment steamer is easy to use and is perfect for removing wrinkles from garments and curtains as well as refreshing furnishing fabrics.
- If using the garment steamer without the fabric brush, keep a distance of at least 5cm between the steam nozzle and the garment.
- Do not directly hover the garment steamer over metal accessories.
- The collar aid supports the garment for easier steaming to remove wrinkles in special areas of the garment, such as collar, pockets and sleeve cuffs.
- The garment steamer has a bottle connector, it can connect a mineral water bottle instead of the water tank, it is convenient to use while travelling.

USE

- Rotate the water tank clockwise and pull it down to remove. Fill the tank with tap water through the water inlet until it reaches the maximum level. Always ensure that the water tank is at least for a third full. Do not exceed the maximum level. Put back the water tank and lock it by turning it counterclockwise.
- Hold the appliance with your hand positioned safely at the neck of the garment steamer in an upright position. Use your other hand to attach the fabric brush onto the steam nozzle.
- Connect the appliance to a power outlet and press the power button. The red indicator light will start flashing. The appliance is ready for use when the light becomes blue. When pressing the power button once again the light will become green, the device is now in ECO mode.
- Press and hold down the steam button. Steam facing away from you in an upright position. Gently press the fabric brush against the garment and move the appliance up and down.
- Release the steam button to stop the steam.

- After using the appliance, press the power button to turn it off. Disconnect the power plug out of the socket.
- Take off the water tank and empty the remaining water from the tank.
- Let the appliance cool down in a upright position.
CAUTION: the high temperature can reach 180 °C, please confirm whether the material is high-temperature resist or not before steaming. Do not leave the spraying panel on the same spot for a long time to avoid damage to the garment.
CAUTION: when not using the appliance and before storage, continue steaming until the water tank runs out of water, then turn off and unplug the appliance and wait until the appliance is cooled down completely.

CLEANING AND MAINTENANCE

- When not using the appliance and before storage, continue steaming until the water tank runs out of water, then turn off and unplug the appliance and wait until the appliance is cooled down completely.
- The steamer is for domestic use only and must be used with normal tap water. Do not use perfume, vinegar or other chemicals in the water tank. The device is not designed to work with these chemicals.
- Clean the outside with a damp cloth. Never use harsh and abrasive cleaners, steel wool or a scouring pad as this will damage the device. Do not immerse in water or other liquid.
- Always ensure the steam outlet hole is clean and free from scaling and not blocked.
- Make sure the main body is dry before storage or packing.

GUARANTEE

- This product is guaranteed for 24 months granted. Your warranty is valid if the product is used in accordance to the instructions and for the purpose for which it was created. In addition, the original purchase (invoice, sales slip or receipt) is to be submitted with the date of purchase, the name of the retailer and the item number of the product.
- For the detailed warranty conditions, please refer to our service website: service.princess.info

ENVIRONMENT



This appliance should not be put into the domestic garbage at the end of its durability, but must be offered at a central point for the recycling of electric and electronic domestic appliances. This symbol on the appliance, instruction manual and packaging puts your attention to this important issue. The materials used in this appliance can be recycled. By recycling of used domestic appliances you contribute an important push to the protection of our environment. Ask your local authorities for information regarding the point of recollection.

Support

You can find all available information and spare parts at <http://www.service.princess.info/>

