



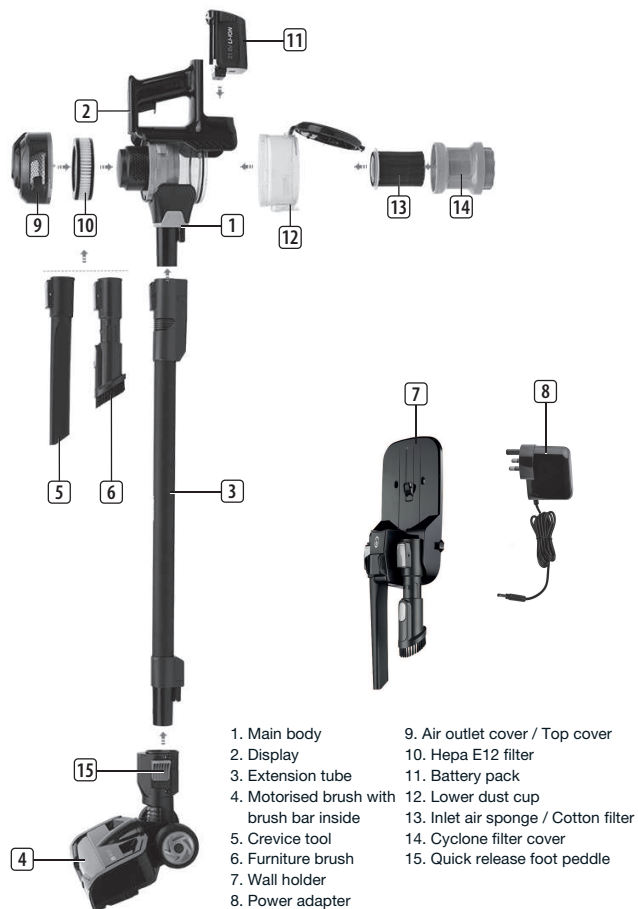
EN Instruction manual



Cordless Vacuum Cleaner

01.339600.02.001

PARTS DESCRIPTION



IMPORTANT SAFETY INSTRUCTIONS

Read all instructions before using your Princess product. By ignoring the safety instructions Princess cannot be held responsible for the damage. When using an electrical appliance, basic safety precautions should always be observed, including the following:

IMPORTANT: This appliance is not intended for use by persons with reduced physical, sensory or mental capabilities, or lack of experience and knowledge, unless they have been given supervision or instruction concerning use of the appliance by a person responsible for their safety. Children shall not use or play with this appliance. Close supervision is necessary to keep appliance and cord out of reach of children during use.

- By ignoring the safety instructions the manufacturer can not be hold responsible for the damage.
- If the supply cord is damaged, it must be replaced by the manufacturer, its service agent or similarly qualified persons in order to avoid a hazard.
- Never move the appliance by pulling the cord and make sure the cord can not become entangled.
- This appliance is only to be used for household purposes and only for the purpose it is made for.

- To protect yourself against an electric shock, do not immerse the cord, plug or appliance in the water or any other liquid.
- The plug must be removed from the socket-outlet before cleaning or maintaining the appliance.
- This appliance can be used by children aged from 8 years and above and persons with reduced physical, sensory or mental capabilities or lack of experience and knowledge if they have been given supervision or instruction concerning use of the appliance in a safe way and understand the hazards involved. Children shall not play with the appliance. Cleaning and user maintenance shall not be made by children without supervision.

SAFETY INSTRUCTIONS

- Risk of suffocation! Keep the packaging material away from children and animals.
- Keep the device, cord and plug away from water or other liquids in order to avoid the risk of an electrical shock. Never touch the mains plug, cord or device with wet or damp hands.

- Keep animals, hair, jewellery, loose clothing, fingers and all other parts of the body away from the moving parts or openings of the appliance when it is in operation. They can be caught in the vacuum cleaner. If something gets stuck in the vacuum cleaner, switch the appliance off immediately.
- Take special care to avoid falling when cleaning stairs.
- Use and store the device only out of the reach of children. Improper use can result in injury and electric shock. The power cord may also not be accessible to children.

PROPER USE

- The appliance must only be used domestically, it is not suitable for industrial or commercial use.
- The appliance must not be used to clean:
- People, animals, plants or items of clothing on the body, always keep the appliance away from body parts and hair.
- Glowing or burning objects like ash, charcoal, burning cigarettes, matches or highly flammable substances.
- Water and all other liquids
- Pointed objects like broken glass or nails.
- Fine dust, construction dust.
- Only use and store the device in enclosed areas. Do not use the device outdoors, in rooms with high humidity or on hot surfaces.
- Check the devices and accessories for damage before each use. Do not use the appliance if the appliance, the cord, the plug or the filter are visibly damaged, do not attempt to repair the appliance yourself or replace the parts yourself. In case of damage, contact a qualified repair center or the helpdesk of the supplier.
- Do not use the device if it malfunctions or has vacuumed up liquids. Have the device repaired by a qualified repair center.
- Only use the device if it has been completely and correctly assembled.
- Do not expose the device to extreme temperatures, severe changes in temperature, open flames, direct sunlight, moisture or wetness.
- Never place heavy objects on the device.
- Empty the dust bin after every use. The filters must also be cleaned regularly.
- Allow the dust bin, dust filter and exhaust filter to dry completely before you reinstall them in the device.

- Only use original spare parts provided by the supplier.
- Store the device in a cool, dry area that is not accessible to children and animals when not in use.
- Never fill the dust bin with liquids.

BATTERY WARNING

- Rechargeable battery is only to be charged under adult supervision.
- Do not attempt to open the rechargeable battery or battery pack as there are no serviceable parts inside.
- Do not disassemble, incinerate or short-circuit the battery or the battery pack. Only replace the battery with an original battery, the use of another battery can cause a fire or explosion.
- The battery is a sealed unit and under normal circumstances it does not constitute a safety hazard. If in any case liquid does leak out of the battery don't touch it and consult a doctor immediately in case of inhalation, skin or eye contact.
- Should a battery leak, the device may become damaged. Clean the battery compartment immediately, avoiding touching your skin.
- Avoid storing the battery in extremely hot or cold environment. A device with a hot or cold battery may not work temporarily, even when the battery is fully charged.
- Do not dispose battery in a fire as it may explode. Battery may also explode if damaged. Please dispose it according to local regulation. Do not dispose it as household waste.

BEFORE THE FIRST USE

Installation of the appliance

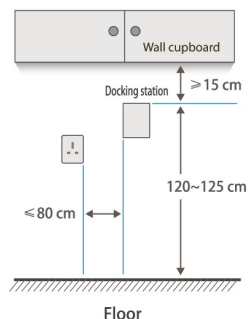


- Take the appliance and accessories out the box. Remove the stickers, protective foil or plastic from the device.
- Insert the removable battery into the rear of the vacuum cleaner unit.
- Your battery will have a nominal charge out of the box. If you find that it runs out sooner than expected, simply follow the charging instructions.
- Insert one end of the tube into the floor head and the other end into the vacuum cleaner.
- The accessories can be attached directly to the device or for cleaning high positions at the end of the extension tube.

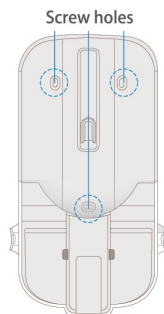
EN

Docking station installation

Installation diagram



Fixing on the wall



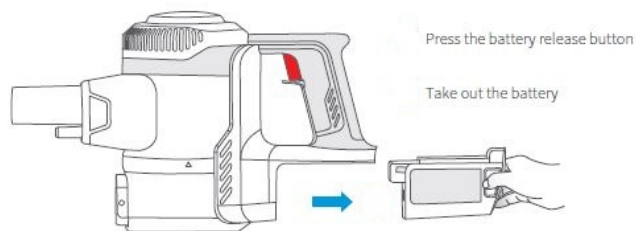
- Do not install on weak structures such as plaster walls and compressed wood boards when their thickness is less than 10mm.
- To prevent fire or electric shock due to leakage, please do not install it on metal walls.
- Hanging area must be flat.
- Wall holder must be placed in ambient temperature between 5°C and 40°C.
- Ensure the screws will not damage any gas pipes, water pipes or wires inside of the walls.
- No part of the appliance should touch the ground when placed on the docking station.
- When installing the docking station, 4mm x 30mm screw is suggested to be used on wooden surface.
- The 6mm x 32mm Wall plug and 4mm x 30mm screw should be used on cement surface.

Charge



- Put the main body on a horizontal table.
- Connect the power cord to the power outlet and the charging port in the handle section of the main body to start charging. The power indicator flashes blue.
- Charging time: 2.5-3.5 hours; discharging time: 15-25 minutes
- The adapter may become warm during charging, this is normal.

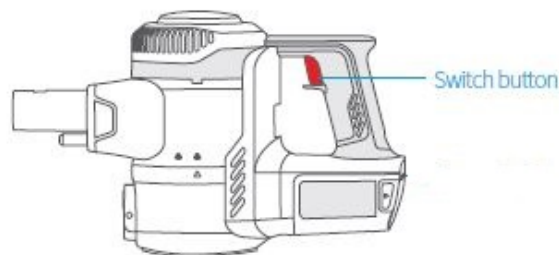
Replacing the battery



- If the battery life becomes shorter and charging time becomes longer, please visit princesshome.co.uk to purchase an additional battery.
- Switch off the power supply before removing the battery.
- Do not use and store batteries at temperatures below 5°C or above 40°C.
- When disposing of this product, remove the battery from the device.

USE

- To prevent blockage of the air passage large objects like large paper and packing materials should be removed from the area before start cleaning.
- Do not use the device when the plug is connected.
- Wait 3 seconds before starting after disconnecting the power supply.
- Hold the handle and push the switch to turn the vacuum cleaner on.



- Push the switch button again to stop cleaning.

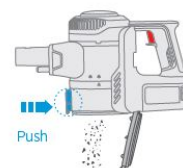
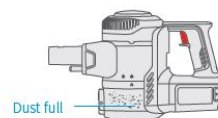


- The power indicator lights under the battery symbol show how full the battery is.
- Place on charge when the power indicator flashes.
- This device has 2 speed settings, press the lower part of the button (MAX) below the display to choose between these 2 settings. The display shows "MAX" at the maximum speed. Press this button again and the device works at normal speed. The "MAX" sign will no longer be shown on the display.

- Pressing the upper part of the button (CARPET/FLOOR) below the display changes the rotation speed of the brush. When the left icon is shown in the display, the brush will rotate at maximum speed. When you press this button again, the right icon will be displayed and the rotation speed will be slower.
- The crevice nozzle can be fitted in order to reach awkward places.
- There is a quick release foot peddle at the base of the tube. Press down on this peddle to allow easy removal of the motorised head. You are now able to attach and use one the various accessories supplied.
- The whole tube itself can also be removed for closer cleaning. Again the accessories supplied will simply click into the main body.

CLEANING AND MAINTENANCE

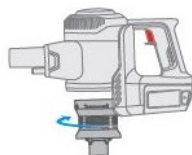
- Make sure you regularly empty the dust container and clean the filters.
- The parts must be completely dry before installing.
- Press the eject button, open the dust container and dump the dust.



- Twist dust container left to remove the dust container, and clean the dust inside the container and on the bottom cover.



- Twist the dust filter left to remove and clean the dust filter.

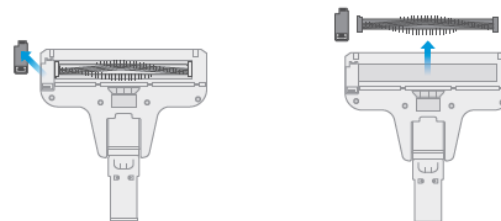


- Twist right to remove the top cover, take out HEPA vertically, and wash with water.



- When the parts are fully dry, install again by reversing the above steps.
- Never immerse the appliance under water. The appliance and the various parts are not dishwasher-proof.

- **Warning!** The appliance contains a driven brush bar. This can cause various hazards to people, animals and objects.
- Make sure the appliance is switched off before you open the brush bar lock, remove or clean the brush bar.
- Unlock the brush bar lock - Disassemble the brush bar for cleaning, remove any debris or hairs caught around the brush bar and reassemble after all parts are completely dried.



- Never block the outlet openings during vacuuming.
- Never vacuum flammable liquids.
- Please pay attention to sharp objects such as glass to prevent injury.
- Do not scrub the cotton filter or apply brute force to it.
- Please make sure that the cotton filter has been installed before assembly.
- Do not continue to use when the cotton filter in the dust cup is damaged.

TROUBLESHOOTING

Problem	Possible reason	Solution
Power brush doesn't work.	Power brush is jammed by large garbage (e.g. packaging film) or hair stuck in the brush.	Clear the garbage or hair that is stuck in the brush.
Running time becomes shorter	Battery is aged or ambient temperature is too high or too low.	Contact your dealer to purchase battery. Use in an appropriate environment.
Suction power becomes weak.	Too much garbage in the dirt container or Cotton filter is blocked.	Clean dirt container. Wash the cotton filter.
Can't charge	Ambient temperature is too high or too low	Charge in an appropriate environment (5~40°C)
Battery leaks	The battery is not used for a long time	Replace battery

ENVIRONMENT



■ This appliance should not be put into the domestic garbage at the end of its life, but must be offered at a central point for the recycling of electric and electronic domestic appliances. This symbol on the appliance, instruction manual and packaging puts your attention to this important issue. The materials used in this appliance can be recycled. By recycling of used domestic appliances you contribute an important push to the protection of our environment. Ask your local authorities for information regarding the point of recycling.

The European directive for batteries (2006/66/EC) states that it is not permitted to throw batteries away with the household waste. They may contain substances which are harmful to the environment. Empty batteries can be handed over to a local, public collection point or a local recycling centre. To avoid overheating as a result of a short circuit, lithium batteries must be removed from the product and the poles must be protected using insulation tape or some other means against short-circuiting.

FOR HOUSEHOLD USE ONLY SAVE THESE INSTRUCTIONS

Support

princesshome.co.uk

smartwares Europe Jules Verneweg 87 5015 BH Tilburg The Netherlands princesshome.co.uk	NL : 080 5940501 Lokaal telf. 88 : 078 4819404 NL Lokaal telf. 88 : 078 4819404 NL telf. local. FR : 0825 560 650 tlf. nat. FR : +49 (0) 180 5107062
	14C2/Min. dk. Festnetz, Mobil max. 40C2/Min.
	138 : +49 (0) 145 250 1231
	15 : +34 938427589

[WEEE Logo]



princesshome.co.uk

© Princess 2019